

**User Manual for  
“Installation of e-Mudhra  
Component”**

Follow the below steps to install the eMudhra component

**Step 1:** After successful download the component, Select APTSMeeesevasigner exe file and Click on Run button as depicted in the below screen.

Name	Date modified	Type	Size
Testing_files	10/18/2019 3:40 PM	File folder	
<b>APTSMeesevaSigner</b>	6/3/2019 12:47 PM	Windows Installer ...	65,084 KB
Technical_Document_WebSockets-APTS...	6/3/2019 12:44 PM	Adobe Acrobat D...	687 KB

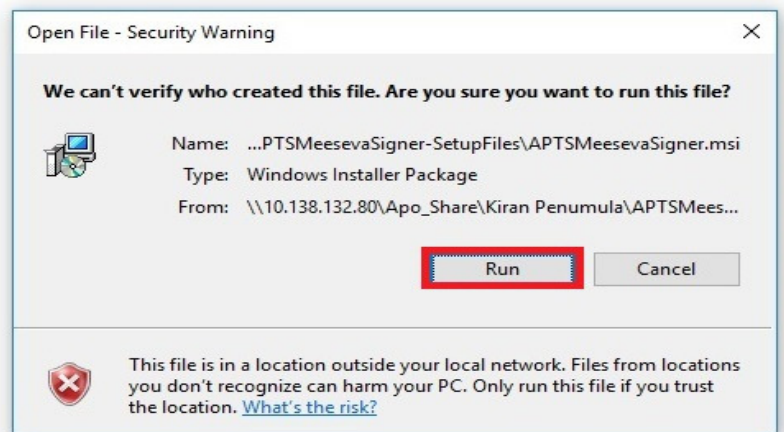


Figure 1: APTSMeeeseva signer.

**Step 2:** click on Next button as shown in the below figure.

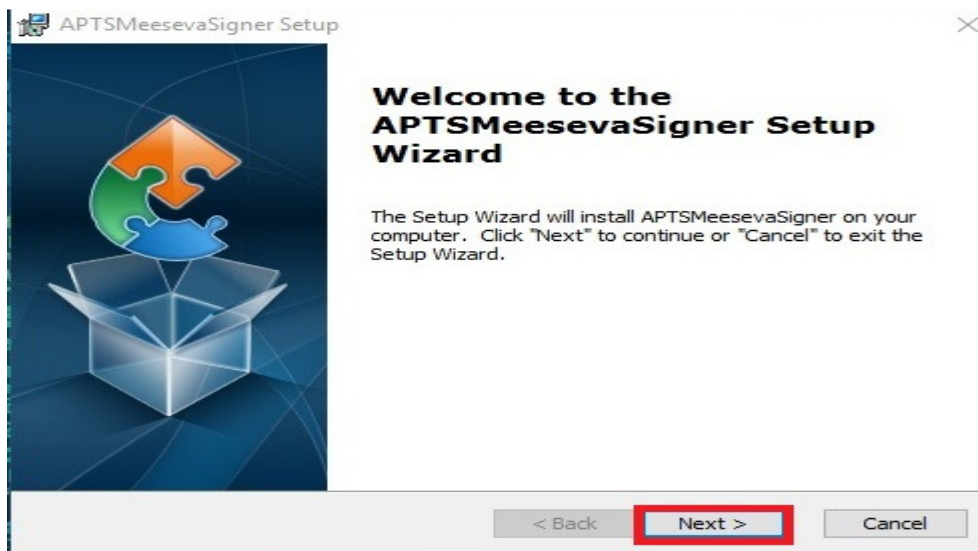


Figure 2: Select Next option

**Step 3:** Select the path folder to install the component as shown in the below figure.

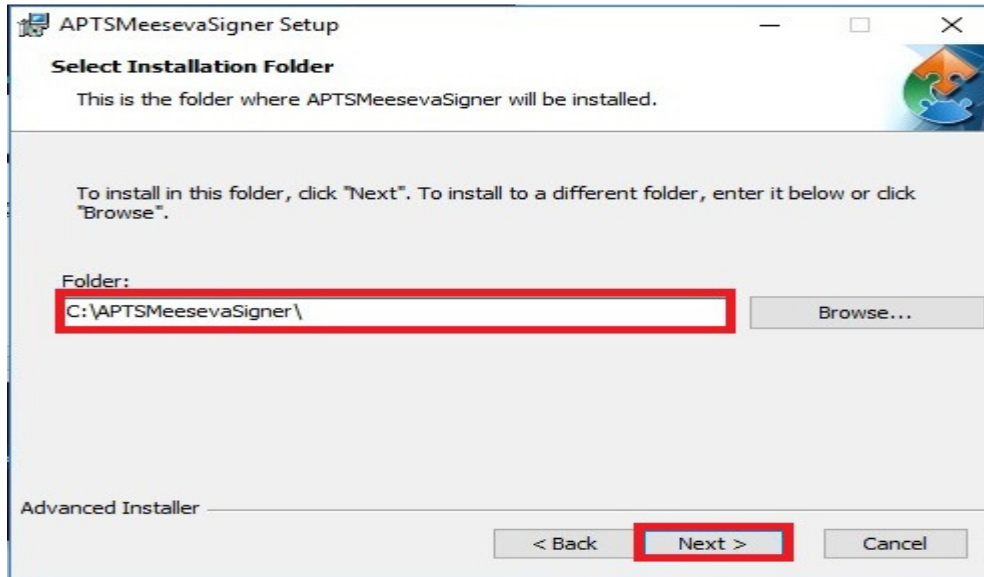


Figure 3: Select location path.

**Step 4:** Click on Install button as shown in the below figure.

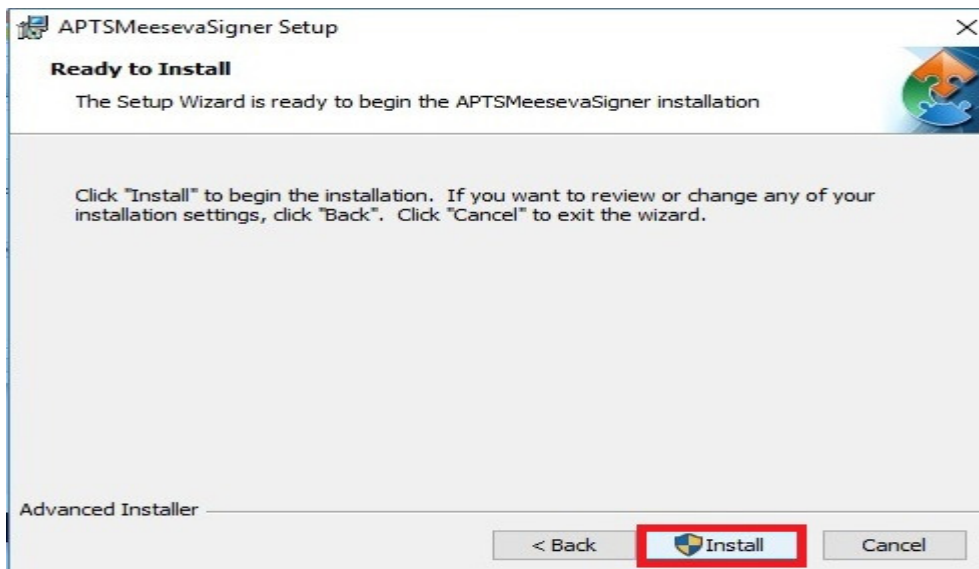


Figure 4: Select Install.

**Step 5:** Click on Finish button as shown in the below figure.



Figure 5: Select Finish.

After successful installation an icon will be created on user Desktop.

**Step 6:** Right click on "eMudhra" icon which is available at Desktop and Run application as Administrator as shown in the below figure.

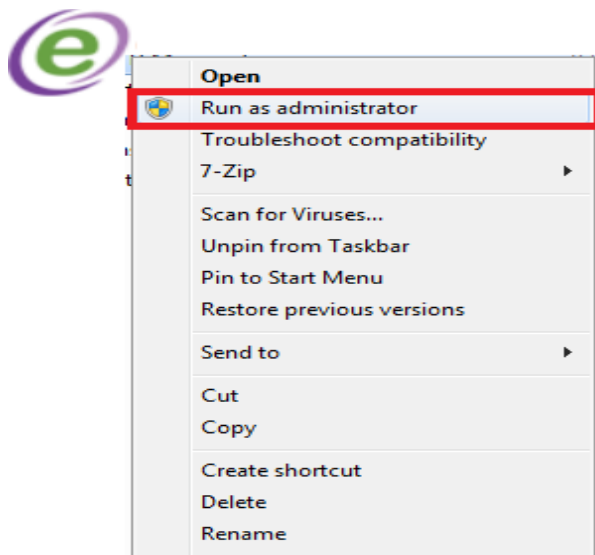


Figure 6: Run as Administrator.

**Step 7:** Message will be displayed as” APTSMeeesevaSigner service started successfully” as shown in the below figure.

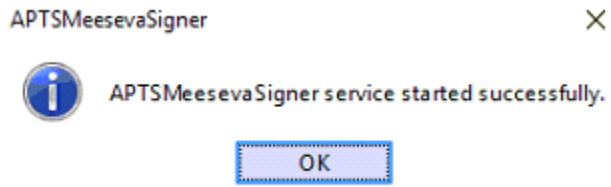


Figure 7: Message of Signer Service.